

peopleworks™
Corporate office

1st Floor, STC Trade Centre, 7/A, Nandini Layout, Bengaluru – 560096

Phone : +91 80 4665 7900 Mobile : +91 8884022929

www.peopleworks.in | info@peopleworks.in

Bengaluru | Chennai | Hyderabad | Mumbai | Pune | Ahmedabad | Delhi

NEW AGE HCM TO MANAGE NEW AGE WORKFORCE

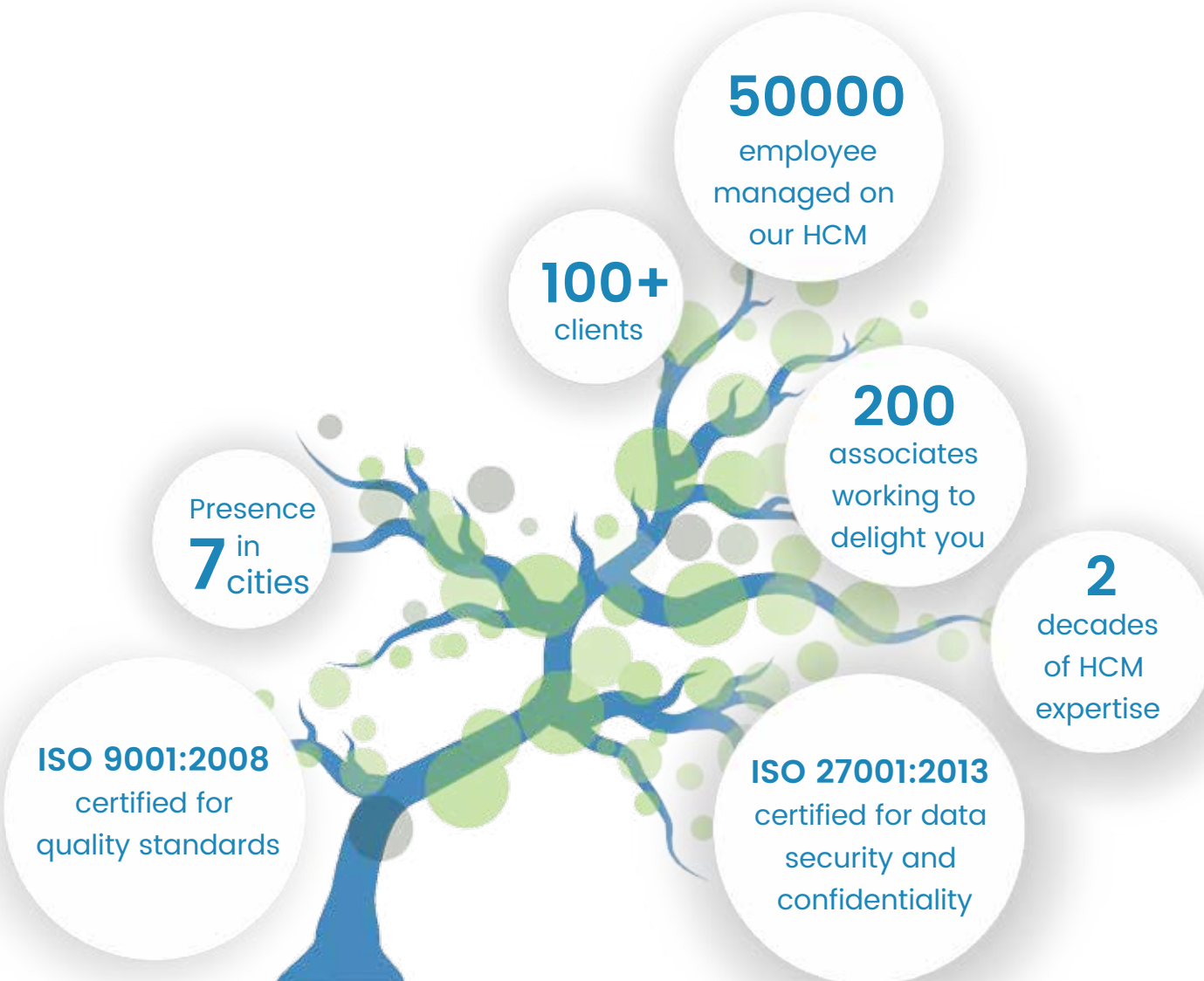
PeopleWorks HCM is a cloud-based Human Capital Management solution that streamlines HR process through automation.

Introduction

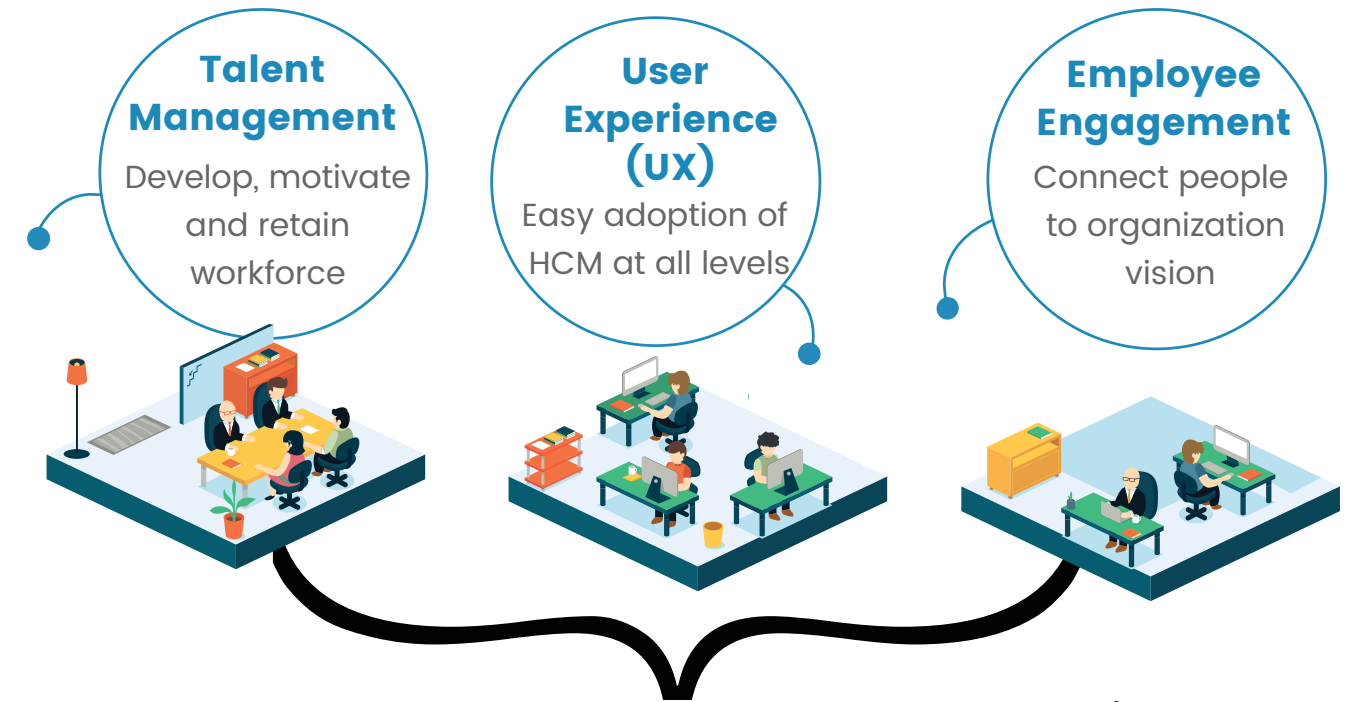
PeopleWorks is a technology company offering its immensely successful flagship solution—PeopleWorks HCM, in the Human Resource Management Automation segment.

PeopleWorks HCM is the coming together of Excellence in **HR Management + Technology + Business growth**

Armed with an in-depth experience in HR Management and market leadership in payroll solutions for over a decade, our large customer base is testimony to the benchmark we have set in the industry.



How does it help your organization?



Your Challenges

Our Solutions

Managing different HR tasks with different software



Single HCM platform for all HR tasks

Management unable to measure employee productivity



Management Dashboard to measure employee productivity

HR Management takes up a lot of your time and cost



Reduces HR time and cost

Having a tough time keeping up with complex HR compliances



Regular compliances updates in-built in the system

Difficulty in managing employees across multiple locations



Easy management of employees across different locations

Unable to own and manage an HCM software in-house

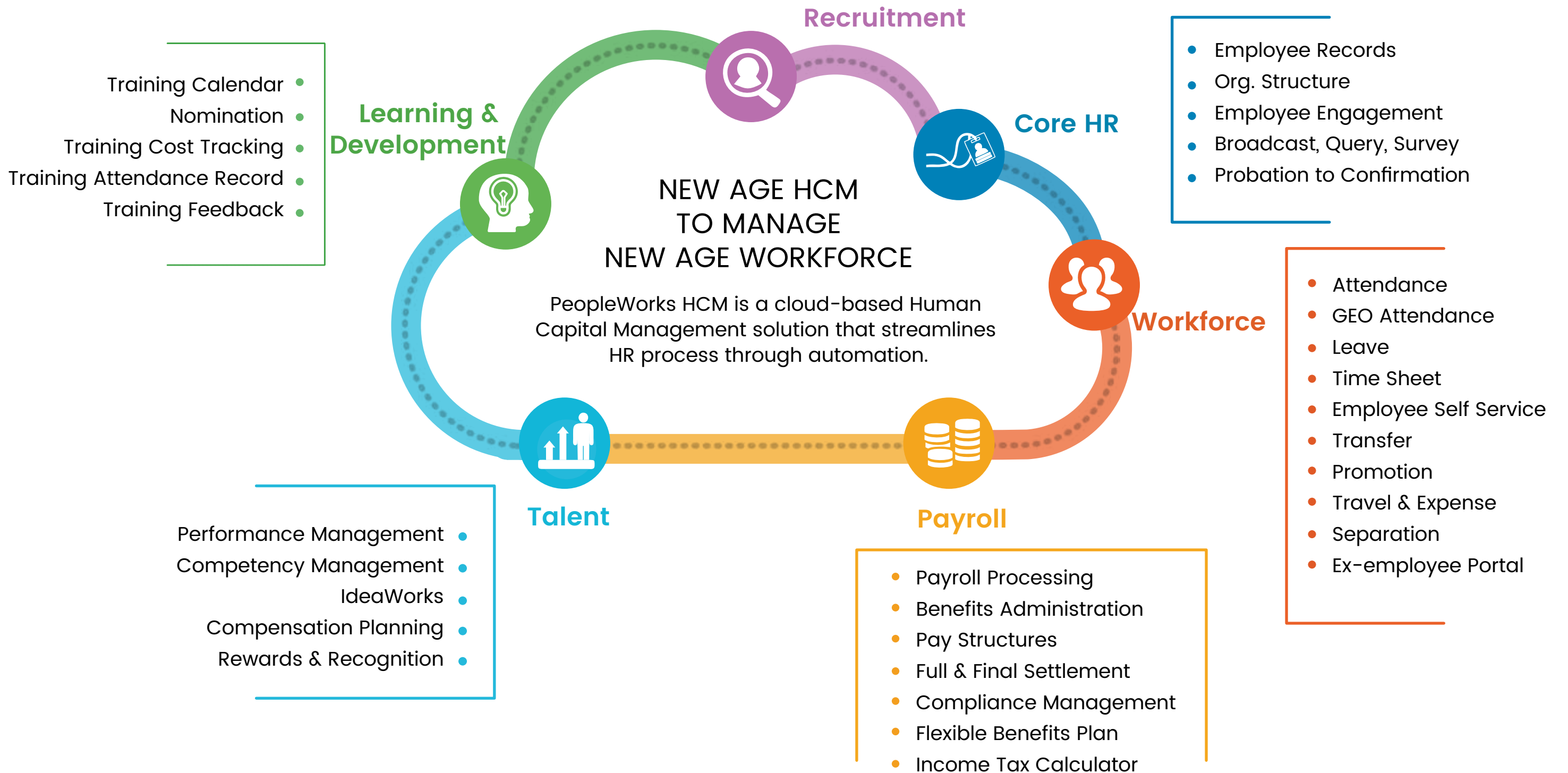


Cloud base solution with no upfront investment

PeopleWorks HCM Modules

PeopleWorks HCM solution is a truly global tool covering the entire HR function, right from hire to retire. All employee related data – at a click!

- Manpower Resource Planning
- Requisition Management
- Resume Sourcing
- Resume Parsing
- Internal Job Posting
- Selection & Interview Management
- Pre-employment Verification
- Offer Management
- Candidate Management
- Onboarding



PeopleWorks HCM Advantages

- New age UX design ensures PeopleWorks HCM is **simple to use**
- **Speed of implementation** as fast as 30 days for a 1000 employee organization
- **Modular Configurability** eliminates need for customisation
- **Customer delight team** works continuously to enhance your user experience
- Robust technology ensures **high levels of data encryption**
- Modern IT infrastructure facilitates **multi-layered server security**
- **Easy Integration** with a host of related applications

Who Benefits with PeopleWorks HCM



peopleworks

PeopleWorks HCM has an enviable pedigree of visionary leadership, innovative HR technology team and a robust customer service philosophy. The solution was born out of a single vision of enabling businesses, both large and small, with a simple, effective and relevant HR management solution. The objective is to support people management in organizations, so employees can emerge as an inspired workforce for collaborative business success.